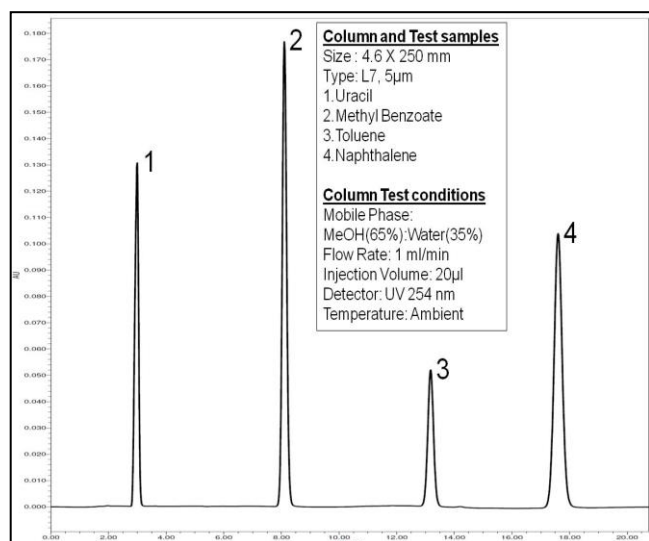




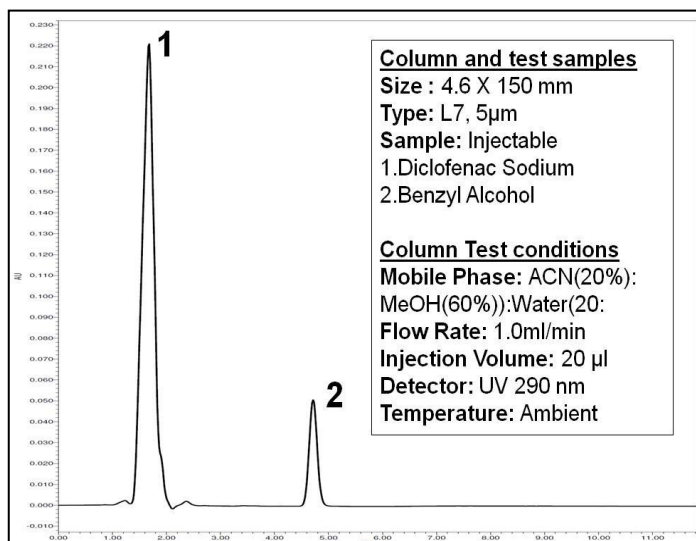
CHROMASOL JADE C8

CHROMASOL JADE C8 has high purity porous spherical 5 μ m silica stationary phase with octyl chains and carbon wt% of 11, surface area 400 m²/g, pore size of 100 Å , 120 Å and is end capped for good peak shape. These columns impart reduced hydrophobic interaction and are a good choice for retention times shorter than in C18 bonded media based columns. For example, non polar compounds like toluene shows weaker retention as the length of the alkyl chains become shorter. A typical Chromatogram and an application are illustrated.

Typical Chromatogram



Anti-inflammatory/Analgesic



Ordering Information

Bonded Phases	Particle size, μ m	Pore Size, Å	Column Size, mm	Part No
C8	5	100	4.6 x 250	IC85100-4625
			4.6 x 150	IC85100-4615
			4.6 x 100	IC85100-4610
		120	4.6 x 250	IC85120-4625
			4.6 x 150	IC85120-4615
			4.6 x 100	IC85120-4610

A performance validation report will be furnished with every column ordered.

Intek Chromasol Pvt. Ltd.

65/A-2, Road No. 3, Bommasandra Industrial Area, Bangalore – 560099. Tel.: +91-80-26087637 / 26087630

Email: sales@intekchromasol.com www.intekchromasol.com